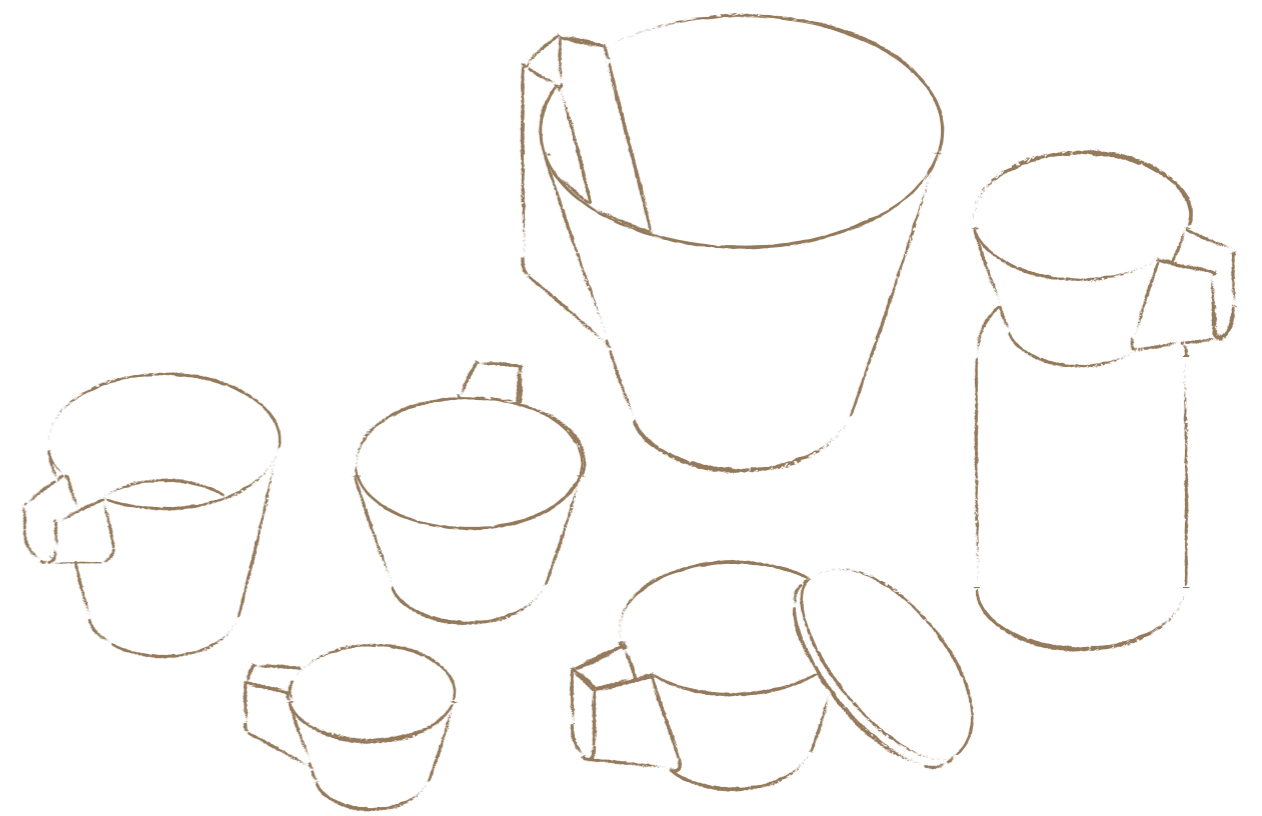
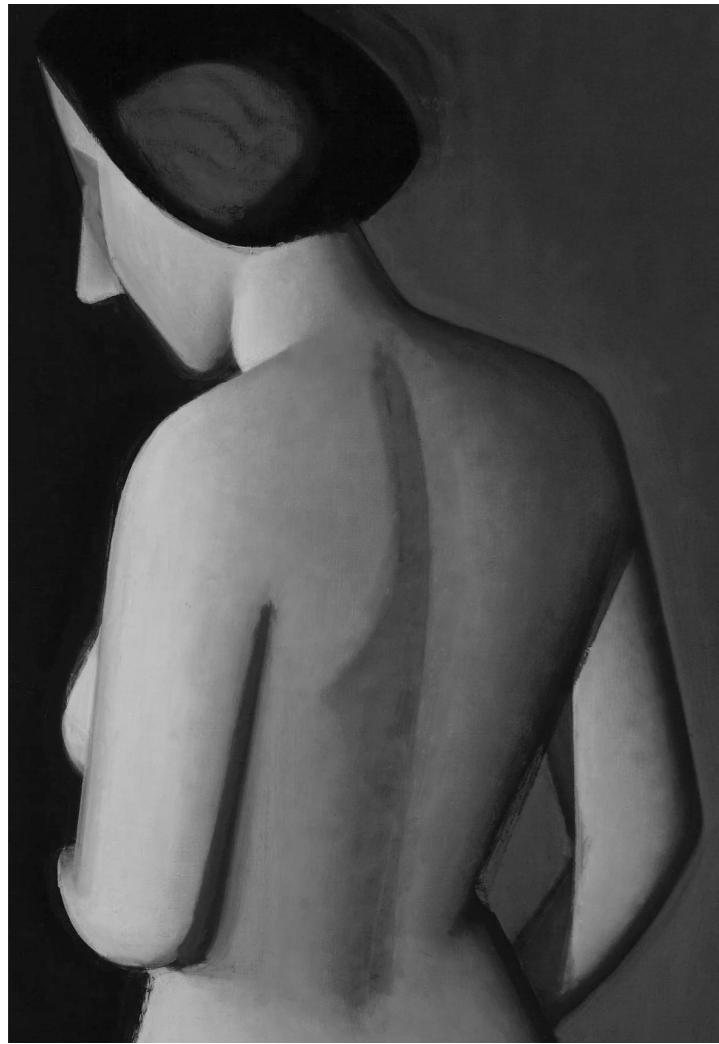


**NOSE SERIES**  
– SIS.L





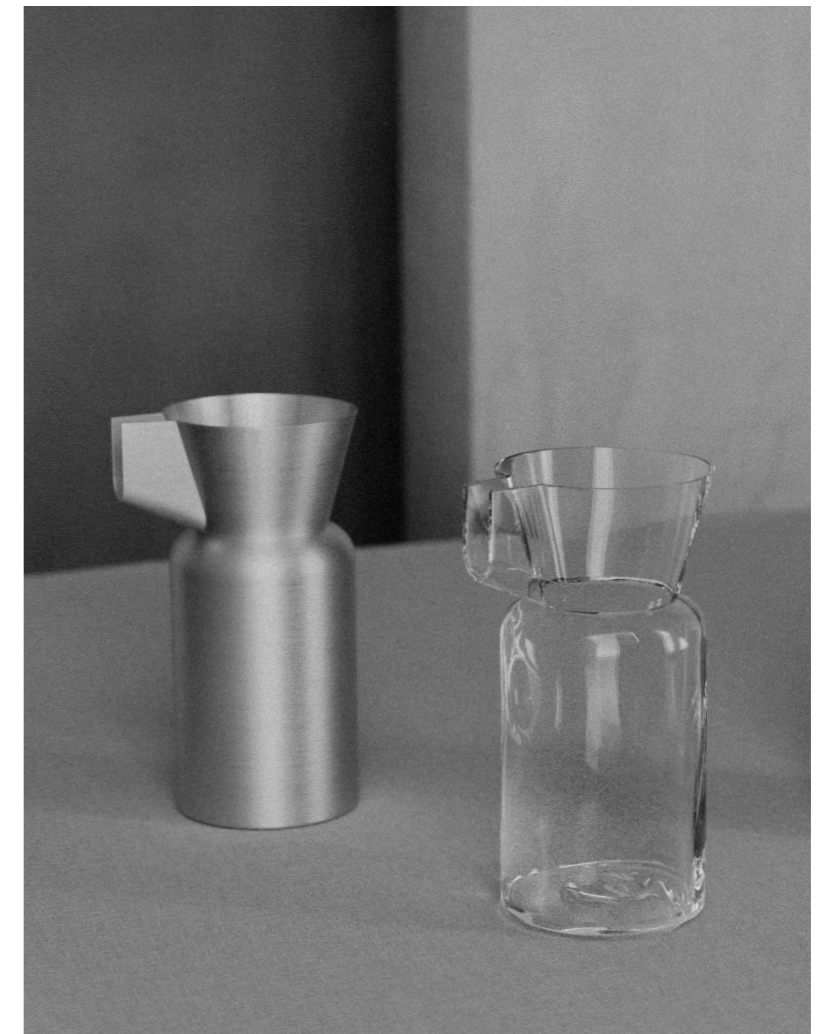
The Nose series was created with inspiration drawn from Danish artist Vilhelm Lundstrøm's cubist painting of a woman.





The exaggerated lines of the woman's features lend a playful shape to the series, with a particular emphasis on the the nose itself, hence the spout's over-dimensional appearance.

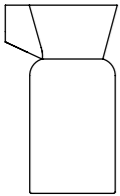
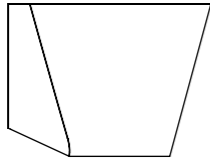
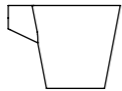

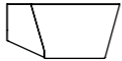
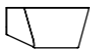




Part of the Nose series includes a carafe, tea and coffee mugs, a milk jug, a sugar bowl, and a vase that doubles as a wine cooler.

The materials chosen for the entire series are spun aluminum, mouth-blown glass, and porcelain.



					
Carafe	Vase / wine cooler	Milk jug	Sugar Bowl	Tea cup	Coffee cup
H: 230mm Ø: 105mm Vol.: 1L	H: 185mm Ø: 220mm Vol.: 4,5L	H: 100mm Ø: 105mm Vol.: 285mL	H: 65mm Ø: 105mm Vol.: 500mL	H: 65mm Ø: 105mm Vol.: 445mL	H: 50mm Ø: 80mm Vol.: 170mL
<ul style="list-style-type: none"> <li>● Metal</li> <li>● Ceramics</li> <li>● Glass</li> </ul>	<ul style="list-style-type: none"> <li>● Metal</li> <li>○ Ceramics</li> <li>● Glass</li> </ul>	<ul style="list-style-type: none"> <li>● Metal</li> <li>● Ceramics</li> <li>○ Glass</li> </ul>	<ul style="list-style-type: none"> <li>● Metal</li> <li>● Ceramics</li> <li>○ Glass</li> </ul>	<ul style="list-style-type: none"> <li>● Metal</li> <li>● Ceramics</li> <li>○ Glass</li> </ul>	<ul style="list-style-type: none"> <li>● Metal</li> <li>● Ceramics</li> <li>○ Glass</li> </ul>







SIS  
I